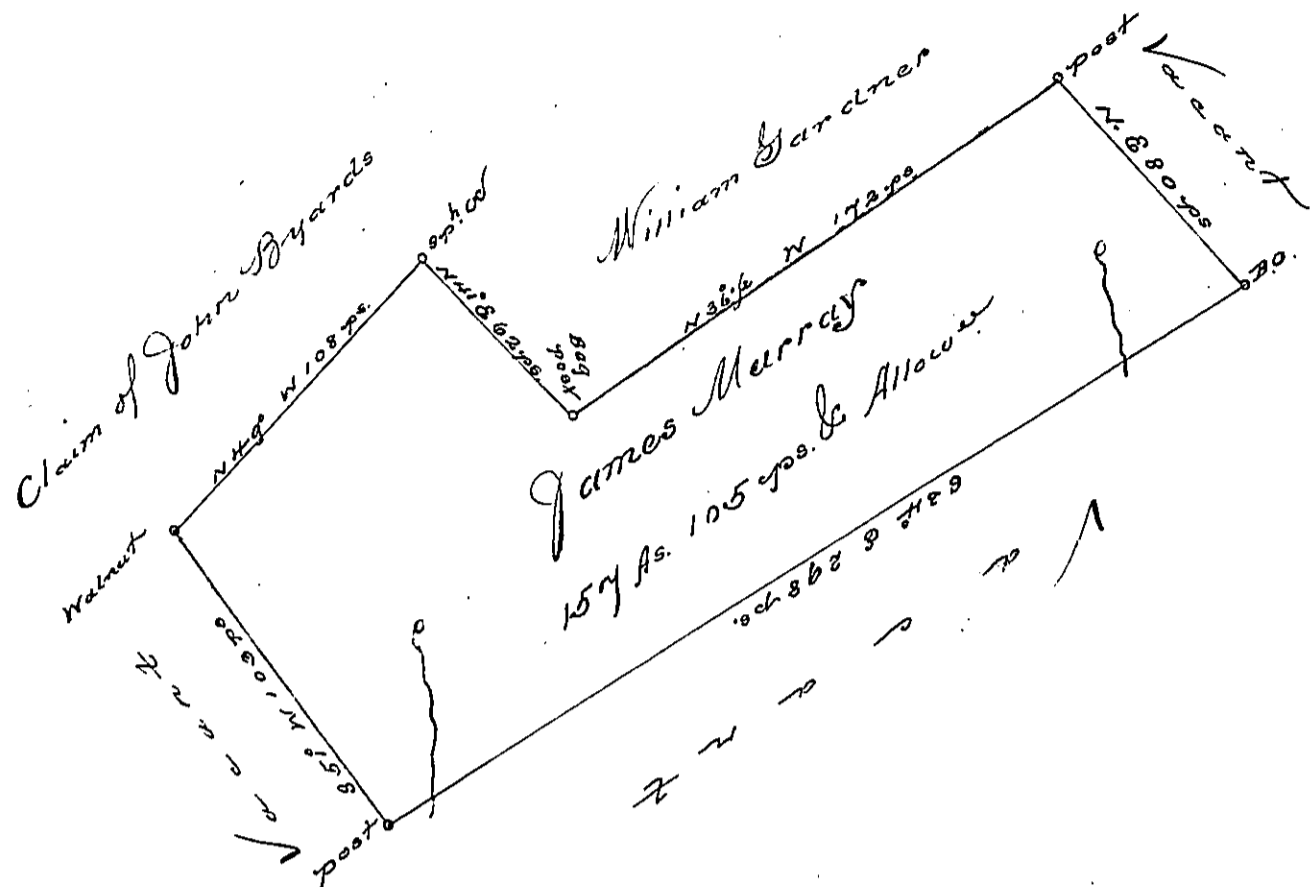


SEE

C-68-53



No. Draught of a Tract of Land Situate in Rye Township in the County of Cumberland. Containing One Hundred and fifty seven Acres and 105 perches and an allowance of six per Cent for Roads. Survey'd May<sup>d</sup> 1767 for James Murray in pursuance of an order of survey dated Sept<sup>r</sup> 9<sup>th</sup> 1766 No. 1171.

John Armstrong D.S.

To John Lukens Esq<sup>r</sup>.  
Surveyor General.

IN TESTIMONY that the above is a copy of the original remaining on file in the Department of Internal Affairs of Pennsylvania, made conformably to an Act of Assembly approved the 16th day of February, 1833, I have hereunto set my Hand and caused the Seal of said Department to be affixed at Harrisburg, this

third day of September, 1895,

James Watta

Secretary of Internal Affairs.